

CHARLES LETHABY - INDUSTRIAL DESIGNER

www.charleslethaby.com | charlie@charleslethaby.co.uk | 07823337740



OVERVIEW

In September 2014, I set up my own business, designing and manufacturing modern lighting. In little more than four years, I have developed over a 100 products, from initial concept through to fully realised commercial products that are stocked in leading international design stores such as Heal's in London, ECC in New Zealand, Archetypal in Hong Kong and Nordiska Galleriet in Stockholm. As well as being designer and founder of Charles Lethaby Lighting, I have been personally responsible for all aspects of the business, ranging from photography and website design, to PR and accounting.

ACQUIRED SKILLS

Adobe -
Indesign, Illustrator and Photoshop

Blender -
Animation, Rendering and Video Editing

Rhino
SketchUp
Mail Chimp
Microsoft Office

Managing social media platforms with over 10,000 followers.

Instagram: charleslethaby
Twitter: @charleslethaby
Facebook: CharlesLethaby

EXPERIENCE

CHARLES LETHABY LIGHTING

Founder

2014 - Present

Project planning and the design and delivery of complex manufactured physical products and engineering assemblies from concept to production.

Extensive knowledge and experience in the pitfalls, risks, must-dos, must avoids to deliver risk and fault free engineered products.

Developing multiple concurrent projects resulting in bringing over 100 products to market over a 4 year period.

Extensive knowledge and experience in the manufacturing, production, certification, testing and documentation required to take products from concept to shop floor.

Developing and nurturing relationships with a range of manufacturers in the UK, Europe, China and Taiwan. This included visits to the Czech Republic, Hong Kong and China.

Designing branding, packaging and marketing material and website maintenance.

Designing, building and exhibiting at trade fairs in London [100% Design], Dubai [Index Show] and Paris [Maison&Objet].

Managing press exposure in a broad range of formats including; The Times, Dezeen, Cool Hunting and Homes and Gardens.

Writing press releases and product descriptions [including copy writing].

Organising importing and exporting worldwide via sea freight and air freight.

Managing and growing social media platforms of over 10,000 followers and a mailing list with over 6,000 subscribers.

Finance and account handling of over £100,000 annual turnover.

.....
St Benedict's Senior School
3D Design Coordinator
2006 - 2014

Teaching 3D Design from Key stage 3-5.

Writing and implementing architecture, lighting, jewelry, graphics and photography schemes of work.

Form tutor from Y7 - Y13.

EDUCATION

Loughborough University

2005/2006

PGCE Design & Technology

Central Saint Martins

2001 - 2004

BA [HONS] Product Design

Chelsea College of Art

2000 - 2001

Art Foundation

INTERESTS

Art and Design exhibitions

Travel - Brazil, Colombia, North America, Sri Lanka, Thailand, Malaysia, Hong Kong and China [supplier visits to glass, plastics and metal factories].

Fitness - I am a regular runner and have taken part in half marathons with a PB of 1 hour 37minutes.

REFERENCES

Available on request

BESPOKE FEATURE LIGHTING DESIGN AND MANUFACTURE

Client: Grapes Design for The Double Tree Hilton

Location: Savage Garden, Tower Bridge, London



BESPOKE FEATURE LIGHTING DESIGN AND MANUFACTURE

Client: Grapes Design for The Double Tree Hilton

Location: Savage Garden, Tower Bridge, London



BESPOKE FEATURE LIGHTING DESIGN AND MANUFACTURE

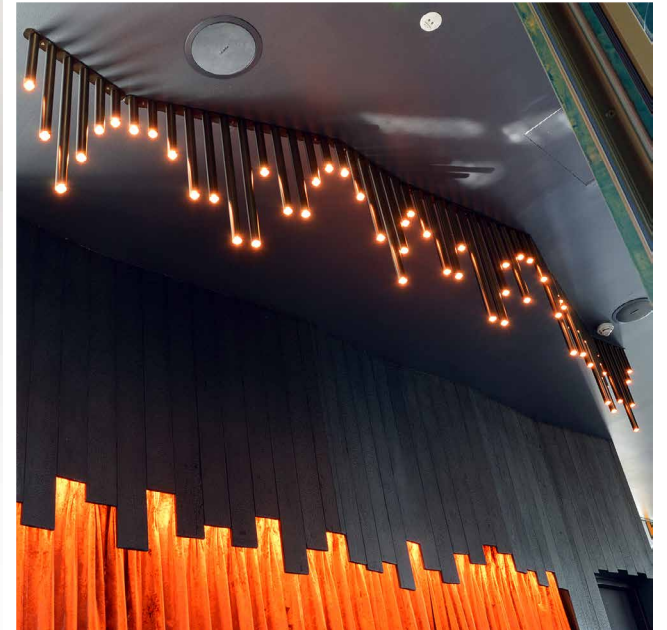
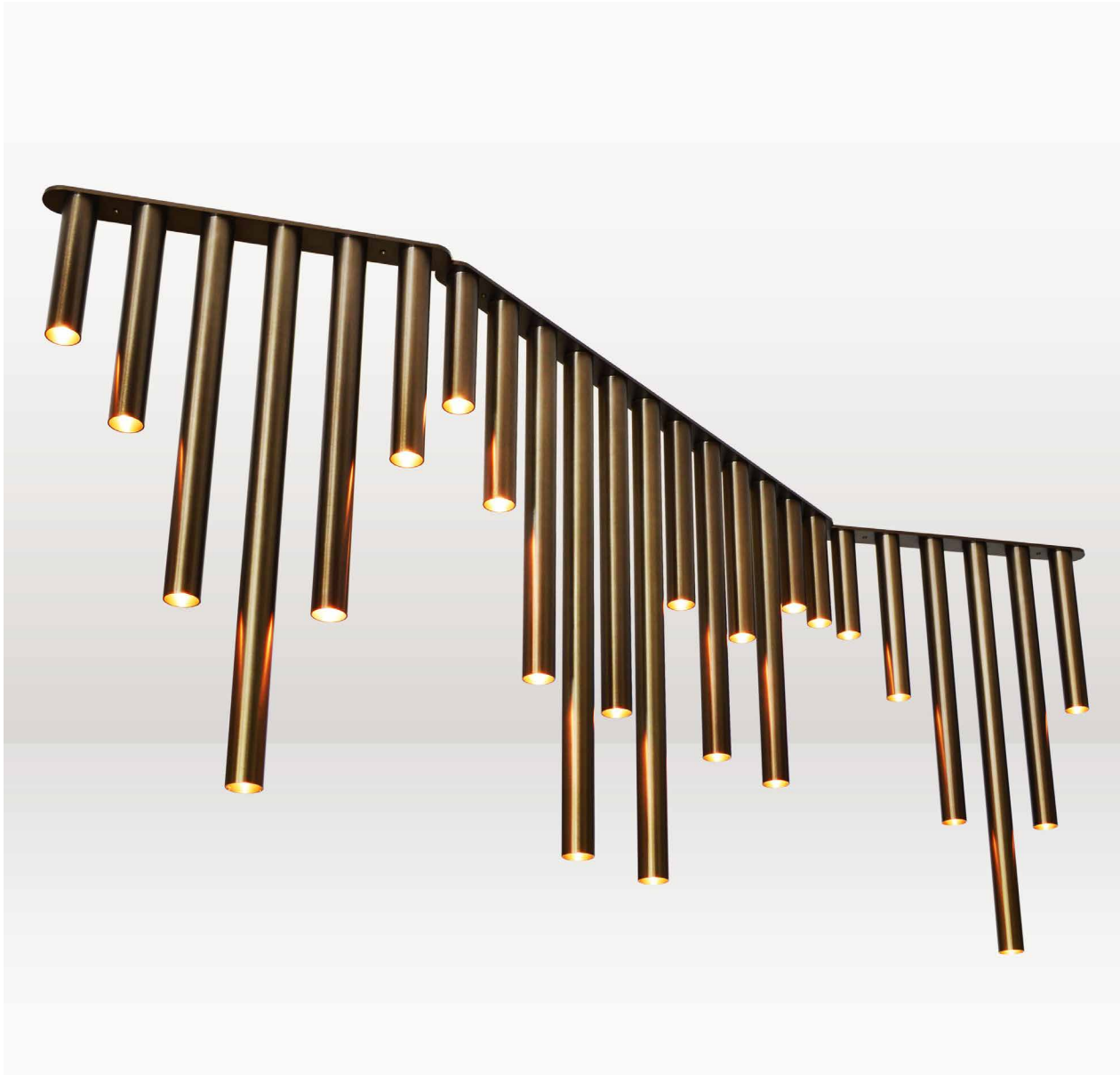
Client: Grapes Design for The Double Tree Hilton
Location: Savage Garden, Tower Bridge, London



BESPOKE FEATURE LIGHTING DESIGN AND MANUFACTURE

Client: Grapes Design for The Double Tree Hilton

Location: Savage Garden, Tower Bridge, London



BESPOKE FEATURE LIGHTING DESIGN AND MANUFACTURE

Client: Grapes Design for The Double Tree Hilton

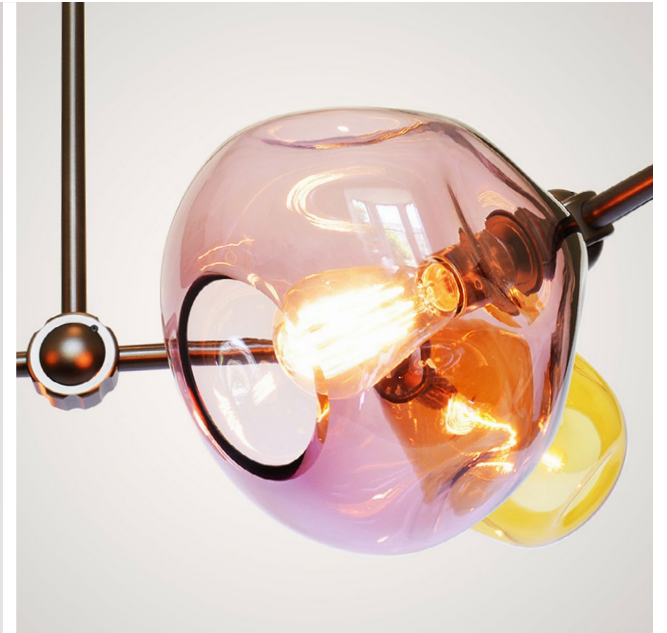
Location: Savage Garden, Tower Bridge, London



BESPOKE FEATURE LIGHTING DESIGN AND MANUFACTURE

Client: Grapes Design for The Double Tree Hilton

Location: Savage Garden, Tower Bridge, London



BESPOKE FEATURE LIGHTING DESIGN AND MANUFACTURE

Client: Grapes Design for Dirty Martini

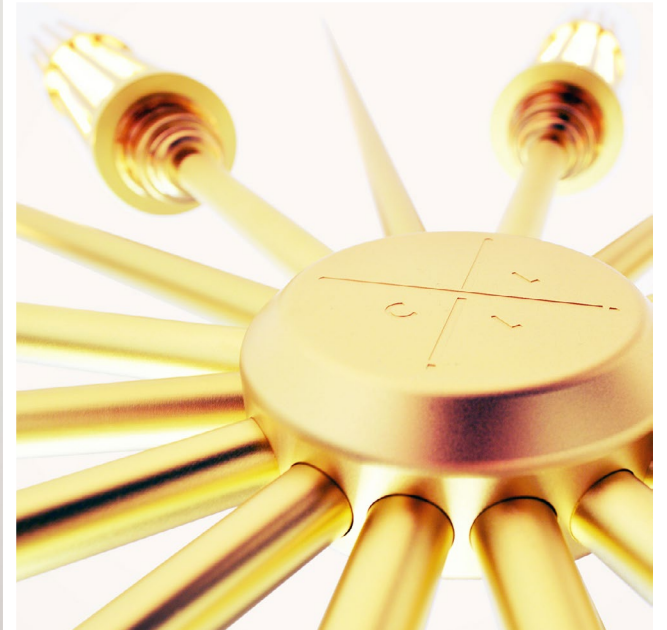
Location: Dirty Martini, Birmingham



BESPOKE FEATURE LIGHTING DESIGN AND MANUFACTURE

Client: Grapes Design for Dirty Martini

Location: Dirty Martini, Birmingham



HOBBS CHRISTMAS WINDOWS

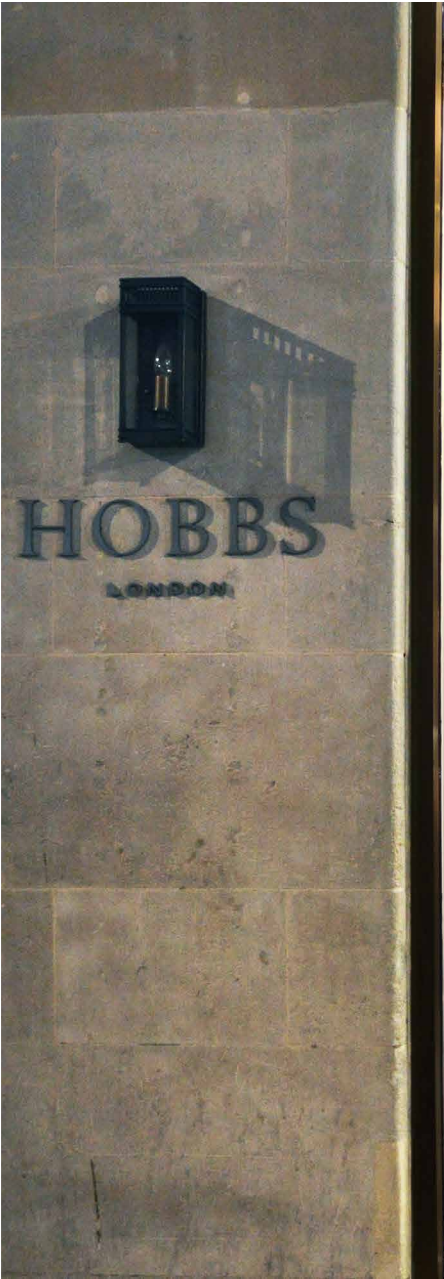
Client: HOBBS

Location: Nationwide, United Kingdom



HOBBS CHRISTMAS WINDOWS

Client: HOBBS
Location: Nationwide, United Kingdom



HOBBS CHRISTMAS WINDOWS

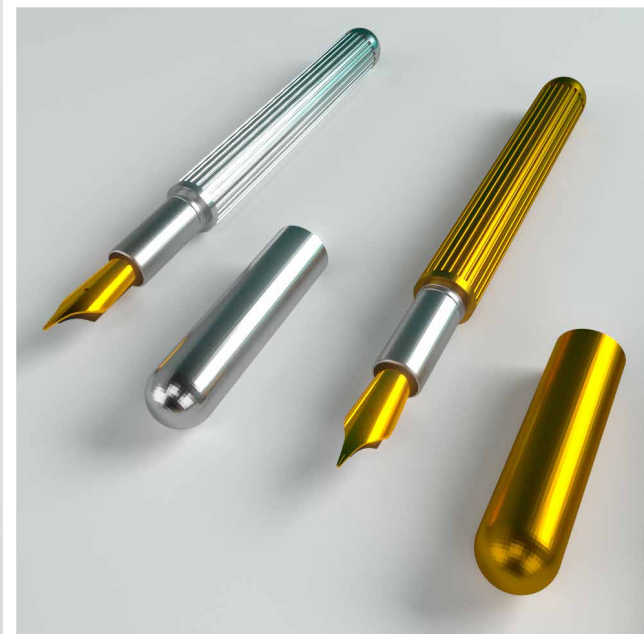
Client: HOBBS

Location: Nationwide, United Kingdom



ACCESSORIES

Fountain pens manufactured in solid brass, aluminium and titanium



ACCESSORIES

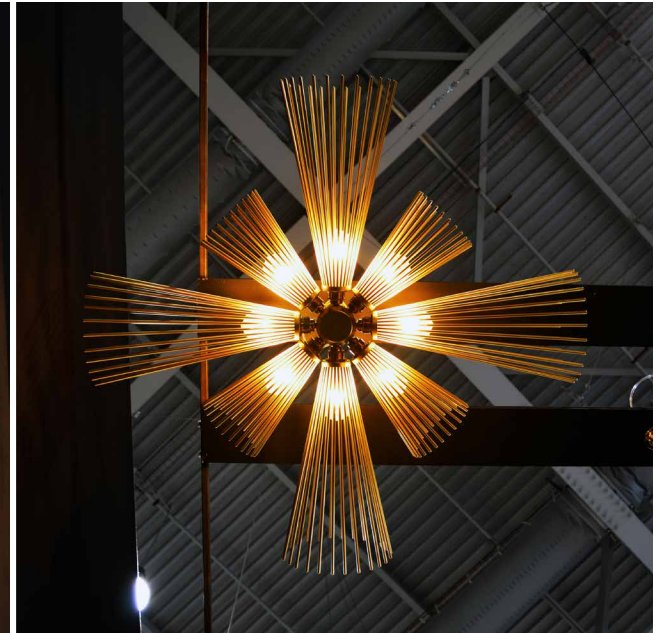
Candle holders





EXHIBITION STAND DESIGN

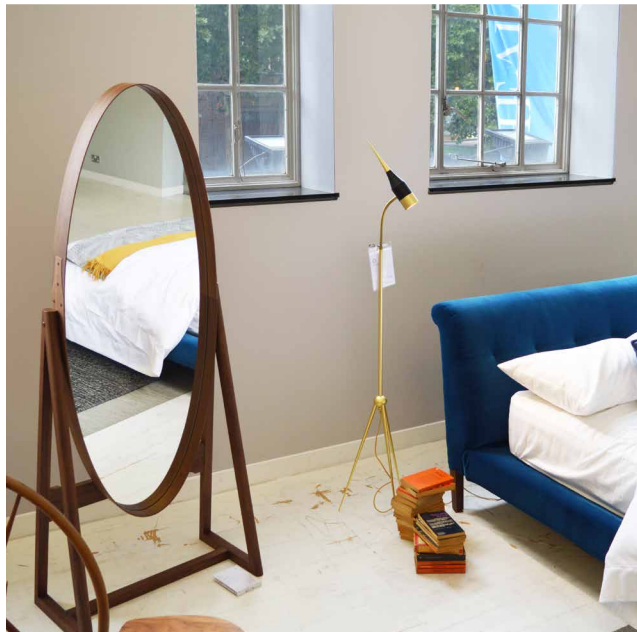
Location: Maison & Objet, Paris



RETAIL DISPLAY

Client: Heal's

Exhibition: Best of British Design



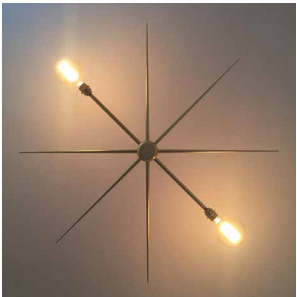
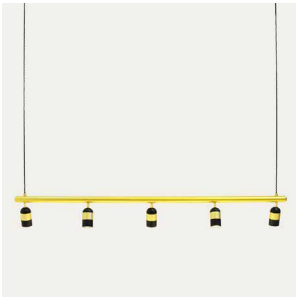
RETAIL DISPLAY

Client: Heal's

Project: Festival of Light



LIGHTING PRODUCTS



CE MARKING



All products have been manufactured in accordance with British Standards 6059

